

TEST REPORT

Applicant: Flashbay Electronics
Address: Building2 ,Jixun Industrial Park ,Xinjiao ,Dong'ao Village ,Shatian Town ,Huiyang District ,Huizhou City , Guangdong Province,P.R.China

The following sample(s) was/were submitted and identified on behalf of the client as:

Sample name: Power Banks
Model: Tour/TR
Manufacturer & Factory: Flashbay Electronics
Address: Building2 ,Jixun Industrial Park ,Xinjiao ,Dong'ao Village ,Shatian Town ,Huiyang District ,Huizhou City , Guangdong Province,P.R.China

Sample No.: S241022030043
Sample Received Date: 2024-10-24
Testing Period: 2024-10-24~ 2024-11-20

Test Requirement:

As specified by client, to determine the Lead(Pb), Cadmium(Cd), Mercury(Hg), Hexavalent Chromium (Cr(VI)), Polybrominated Biphenyls(PBBs), Polybrominated Diphenyl Ethers(PBDEs), Bis-(2-ethylhexyl) Phthalate (DEHP), Benzyl butyl Phthalate (BBP), Dibutyl Phthalate (DBP) and Diisobutyl Phthalate(DIBP)contents in the submitted sample(s) in accordance with RoHS Directive (EU) 2015/863 amending Annex II to Directive 2011/65/EU.

Conclusion

Pass

Test Result(s): Please refer to the following page(s);

Test Method: Please refer to the following page(s);

Compiled by: Nina Car Reviewed by: Luetta Mo

Approved by: May Li Date: 2024-11-20

Sample Description:

No.	Sample name	Description	
1	Shell	White leather with printing	
2		White plastic shell	
3	PCBA-S0_V0	Green PCB	
4		Tin solder	
5		White adhesive tape	
6		Silver metal shell of type-c interface	
7		Gray plastic of type-c interface	
8		Silver metal plug pin of type-c interface	
9		Magnet core of inductor	
10		Coil of inductor	
11		Black body of thermistor	
12		Red metal wire of thermistor	
13		Red wire jacket	
14		Black wire jacket	
15		Core of wire	
16		SMD diode	
17		SMD chip	
18		SMD capacitor	
19		SMD fuse	
20		Adapter	White plastic of shell
21			White encapsulation of shell
22	Green PCB of type-c interface		
23	Silver metal shell of type-c interface		
24	Gray plastic of type-c interface		
25	Silver metal plug pin of type-c interface		
26	Silver metal shell of Micro interface		
27	Gray plastic of Micro interface		
28	Silver metal plug pin of Micro interface		
29	Connecting cable	White encapsulation of Micro interface	
30		White plastic of Micro interface	
31		Silver metal shell of Micro interface	
32		Gray plastic of Micro interface	
33		White colloid of Micro interface	
34		Silver metal plug pin of Micro interface	
35		White wire jacket	
36		Cupreous metal wire core	
37		Red metal wire core	
38		Battery	Yellow transparent adhesive tape
39	Transparent double-sided adhesive		
40	Green adhesive paper		

Test Result(s):
Lead(Pb), Cadmium(Cd), Mercury(Hg), Hexavalent Chromium (Cr(VI)), Polybrominated Biphenyls (PBBs), Polybrominated Diphenyl Ethers(PBDEs)

Part No.	Test Items	XRF Screening Result(mg/kg)	Chemical Test Result(mg/kg)	Conclusion	
1	Pb	BL	/	Pass	
	Cd	BL	/		
	Hg	BL	/		
	Cr	Cr(VI)	BL		/
	Br	PBBs	BL		/
PBDEs		/			
2	Pb	BL	/	Pass	
	Cd	BL	/		
	Hg	BL	/		
	Cr	Cr(VI)	BL		/
	Br	PBBs	BL		/
PBDEs		/			
3	Pb	BL	/	Pass	
	Cd	BL	/		
	Hg	BL	/		
	Cr	Cr(VI)	BL		/
	Br	PBBs	IN		N.D.
PBDEs		N.D.			
4	Pb	BL	/	Pass	
	Cd	BL	/		
	Hg	BL	/		
	Cr	Cr(VI)	BL		/
	Br	PBBs	/		/
PBDEs		/			
5	Pb	BL	/	Pass	
	Cd	BL	/		
	Hg	BL	/		
	Cr	Cr(VI)	BL		/
	Br	PBBs	BL		/
PBDEs		/			
6	Pb	BL	/	Pass	
	Cd	BL	/		
	Hg	BL	/		
	Cr	Cr(VI)	IN		N.D.
	Br	PBBs	/		/
PBDEs		/			

7	Pb		BL	/	Pass
	Cd		BL	/	
	Hg		BL	/	
	Cr	Cr(VI)	BL	/	
	Br	PBBs	BL	/	
PBDEs		/			
8	Pb		BL	/	Pass
	Cd		BL	/	
	Hg		BL	/	
	Cr	Cr(VI)	BL	/	
	Br	PBBs	/	/	
PBDEs		/			
9	Pb		BL	/	Pass
	Cd		BL	/	
	Hg		BL	/	
	Cr	Cr(VI)	IN	N.D.	
	Br	PBBs	/	/	
PBDEs		/			
10	Pb		BL	/	Pass
	Cd		BL	/	
	Hg		BL	/	
	Cr	Cr(VI)	BL	/	
	Br	PBBs	/	/	
PBDEs		/			
11	Pb		BL	/	Pass
	Cd		BL	/	
	Hg		BL	/	
	Cr	Cr(VI)	BL	/	
	Br	PBBs	BL	/	
PBDEs		/			
12	Pb		BL	/	Pass
	Cd		BL	/	
	Hg		BL	/	
	Cr	Cr(VI)	BL	/	
	Br	PBBs	/	/	
PBDEs		/			

13	Pb		BL	/	Pass
	Cd		BL	/	
	Hg		BL	/	
	Cr	Cr(VI)	BL	/	
	Br	PBBs	BL	/	
PBDEs		/			
14	Pb		BL	/	Pass
	Cd		BL	/	
	Hg		BL	/	
	Cr	Cr(VI)	BL	/	
	Br	PBBs	BL	/	
PBDEs		/			
15	Pb		BL	/	Pass
	Cd		BL	/	
	Hg		BL	/	
	Cr	Cr(VI)	BL	/	
	Br	PBBs	/	/	
PBDEs		/	/		
16	Pb		BL	/	Pass
	Cd		BL	/	
	Hg		BL	/	
	Cr	Cr(VI)	BL	/	
	Br	PBBs	BL	/	
PBDEs		/			
17	Pb		BL	/	Pass
	Cd		BL	/	
	Hg		BL	/	
	Cr	Cr(VI)	BL	/	
	Br	PBBs	BL	/	
PBDEs		/			
18	Pb		BL	/	Pass
	Cd		BL	/	
	Hg		BL	/	
	Cr	Cr(VI)	BL	/	
	Br	PBBs	BL	/	
PBDEs		/			

19	Pb		BL	/	Pass
	Cd		BL	/	
	Hg		BL	/	
	Cr	Cr(VI)	BL	/	
	Br	PBBs	BL	/	
PBDEs		/			
20	Pb		BL	/	Pass
	Cd		BL	/	
	Hg		BL	/	
	Cr	Cr(VI)	BL	/	
	Br	PBBs	BL	/	
PBDEs		/			
21	Pb		BL	/	Pass
	Cd		BL	/	
	Hg		BL	/	
	Cr	Cr(VI)	BL	/	
	Br	PBBs	BL	/	
PBDEs		/			
22	Pb		BL	/	Pass
	Cd		BL	/	
	Hg		BL	/	
	Cr	Cr(VI)	BL	/	
	Br	PBBs	IN	N.D.	
PBDEs		N.D.			
23	Pb		BL	/	Pass
	Cd		BL	/	
	Hg		BL	/	
	Cr	Cr(VI)	IN	N.D.	
	Br	PBBs	/	/	
PBDEs		/			
24	Pb		BL	/	Pass
	Cd		BL	/	
	Hg		BL	/	
	Cr	Cr(VI)	BL	/	
	Br	PBBs	BL	/	
PBDEs		/			

25	Pb		BL	/	Pass
	Cd		BL	/	
	Hg		BL	/	
	Cr	Cr(VI)	BL	/	
	Br	PBBs	/	/	
PBDEs		/			
26	Pb		BL	/	Pass
	Cd		BL	/	
	Hg		BL	/	
	Cr	Cr(VI)	BL	/	
	Br	PBBs	/	/	
PBDEs		/			
27	Pb		BL	/	Pass
	Cd		BL	/	
	Hg		BL	/	
	Cr	Cr(VI)	BL	/	
	Br	PBBs	BL	/	
PBDEs		/			
28	Pb		BL	/	Pass
	Cd		BL	/	
	Hg		BL	/	
	Cr	Cr(VI)	BL	/	
	Br	PBBs	/	/	
PBDEs		/			
29	Pb		BL	/	Pass
	Cd		BL	/	
	Hg		BL	/	
	Cr	Cr(VI)	BL	/	
	Br	PBBs	BL	/	
PBDEs		/			
30	Pb		BL	/	Pass
	Cd		BL	/	
	Hg		BL	/	
	Cr	Cr(VI)	BL	/	
	Br	PBBs	BL	/	
PBDEs		/			

31	Pb		BL	/	Pass
	Cd		BL	/	
	Hg		BL	/	
	Cr	Cr(VI)	IN	N.D.	
	Br	PBBs	/	/	
PBDEs		/			
32	Pb		BL	/	Pass
	Cd		BL	/	
	Hg		BL	/	
	Cr	Cr(VI)	BL	/	
	Br	PBBs	BL	/	
PBDEs		/			
33	Pb		BL	/	Pass
	Cd		BL	/	
	Hg		BL	/	
	Cr	Cr(VI)	BL	/	
	Br	PBBs	BL	/	
PBDEs		/			
34	Pb		BL	/	Pass
	Cd		BL	/	
	Hg		BL	/	
	Cr	Cr(VI)	BL	/	
	Br	PBBs	/	/	
PBDEs		/			
35	Pb		BL	/	Pass
	Cd		BL	/	
	Hg		BL	/	
	Cr	Cr(VI)	BL	/	
	Br	PBBs	BL	/	
PBDEs		/			
36	Pb		BL	/	Pass
	Cd		BL	/	
	Hg		BL	/	
	Cr	Cr(VI)	BL	/	
	Br	PBBs	/	/	
PBDEs		/			

37	Pb		BL	/	Pass
	Cd		BL	/	
	Hg		BL	/	
	Cr	Cr(VI)	BL	/	
	Br	PBBs	/	/	
PBDEs		/			
38	Pb		BL	/	Pass
	Cd		BL	/	
	Hg		BL	/	
	Cr	Cr(VI)	BL	/	
	Br	PBBs	BL	/	
PBDEs		/			
39	Pb		BL	/	Pass
	Cd		BL	/	
	Hg		BL	/	
	Cr	Cr(VI)	BL	/	
	Br	PBBs	BL	/	
PBDEs		/			
40	Pb		BL	/	Pass
	Cd		BL	/	
	Hg		BL	/	
	Cr	Cr(VI)	BL	/	
	Br	PBBs	BL	/	
PBDEs		/			

Bis-(2-ethylhexyl) Phthalate (DEHP), Benzyl butyl Phthalate (BBP), Dibutyl Phthalate (DBP) and Diisobutyl Phthalate(DIBP)

Test Items	Result(mg/kg)		
	1	2+7+20	3+22
Bis-(2-ethylhexyl) Phthalate (DEHP)	N.D.	N.D.	N.D.
Benzyl butyl Phthalate (BBP)	N.D.	N.D.	N.D.
Dibutyl Phthalate (DBP)	N.D.	N.D.	N.D.
Diisobutyl Phthalate(DIBP)	N.D.	N.D.	N.D.
Conclusion	Pass	Pass	Pass

Test Items	Result(mg/kg)		
	5	11	13+14+35
Bis-(2-ethylhexyl) Phthalate (DEHP)	N.D.	N.D.	N.D.
Benzyl butyl Phthalate (BBP)	N.D.	N.D.	N.D.
Dibutyl Phthalate (DBP)	N.D.	N.D.	N.D.
Diisobutyl Phthalate(DIBP)	N.D.	N.D.	N.D.
Conclusion	Pass	Pass	Pass

Test Items	Result(mg/kg)		
	16+17+18	19	21+29
Bis-(2-ethylhexyl) Phthalate (DEHP)	N.D.	N.D.	N.D.
Benzyl butyl Phthalate (BBP)	N.D.	N.D.	N.D.
Dibutyl Phthalate (DBP)	N.D.	N.D.	N.D.
Diisobutyl Phthalate(DIBP)	N.D.	N.D.	N.D.
Conclusion	Pass	Pass	Pass

Test Items	Result(mg/kg)		
	24+27+30	32	33
Bis-(2-ethylhexyl) Phthalate (DEHP)	N.D.	N.D.	N.D.
Benzyl butyl Phthalate (BBP)	N.D.	N.D.	N.D.
Dibutyl Phthalate (DBP)	N.D.	N.D.	N.D.
Diisobutyl Phthalate(DIBP)	N.D.	N.D.	N.D.
Conclusion	Pass	Pass	Pass

Test Items	Result(mg/kg)		
	38	39	40
Bis-(2-ethylhexyl) Phthalate (DEHP)	N.D.	N.D.	N.D.
Benzyl butyl Phthalate (BBP)	N.D.	N.D.	N.D.
Dibutyl Phthalate (DBP)	N.D.	N.D.	N.D.
Diisobutyl Phthalate(DIBP)	N.D.	N.D.	N.D.
Conclusion	Pass	Pass	Pass

- Note:
- 1.N.D. = Not Detected (<MDL)
MDL = Method Detection Limit
1mg/kg = 1ppm =0.0001%
/=Not Regulated or Not Applicable
 2. BL = Below the XRF screening limit
IN = Further chemical test will be conducted when the screening result inconclusive
OL = Further chemical test will be conducted while the result is above the screening limit.
 3. For metal samples, the sample is negative for Cr(VI), if the Cr(VI) concentration is less than 0.10 µg/cm², the coating is considered a non- Cr(VI) based coating;
The sample is positive for Cr(VI), if the Cr(VI) concentration is greater than 0.13 µg/cm²,
The sample coating is considered to contain Cr(VI);
The result is considered to be inconclusive, the Cr(VI) concentration is between the 0.10 µg/cm² and 0.13 µg/cm², unavoidable coating variations may influence the determination.
Because the storage condition and production date of the sample are not known, the test results of the sample of hexavalent chromium can only represent the state of hexavalent chromium in the samples tested.
- Remark:
1. When conducting the test for PBBs&PBDEs, XRF was introduced to screen Br Exclusively; When conducting the test for Hexavalent Chromium, XRF was introduced to screen Chromium exclusively.

Test Method:

1. With reference to IEC 62321-1: 2013 Ed.1.0, IEC 62321-2:2021 Ed.2.0, IEC 62321-3-1:2013 Ed.1.0. XRF screening limits in mg/kg for regulated elements in various matrices.

Element	Limit of IEC 62321-3-1:2013 Ed.1.0 (mg/kg)		
	Polymers	Metals	Composite material
Pb	$BL \leq (700-3\sigma) < X$ $< (1300+3\sigma) \leq OL$	$BL \leq (700-3\sigma) < X$ $< (1300+3\sigma) \leq OL$	$BL \leq (500-3\sigma) < X$ $< (1500+3\sigma) \leq OL$
Cd	$BL \leq (70-3\sigma) < X <$ $(130+3\sigma) \leq OL$	$BL \leq (70-3\sigma) < X <$ $(130+3\sigma) \leq OL$	$LOD < X < (150+3\sigma)$ $\leq OL$
Hg	$BL \leq (700-3\sigma) < X$ $< (1300+3\sigma) \leq OL$	$BL \leq (700-3\sigma) < X$ $< (1300+3\sigma) \leq OL$	$BL \leq (500-3\sigma) < X$ $< (1500+3\sigma) \leq OL$
Cr	$BL \leq (700-3\sigma) < X$	$BL \leq (700-3\sigma) < X$	$BL \leq (500-3\sigma) < X$
Br	$BL \leq (300-3\sigma) < X$	/	$BL \leq (250-3\sigma) < X$

Note: BL= Below the XRF screening limit
 OL=Over the XRF screening limit
 X=The symbol "X" marks the region where further investigation is necessary.
 3σ =The reproducibility of analytical instruments
 LOD= Detection limit

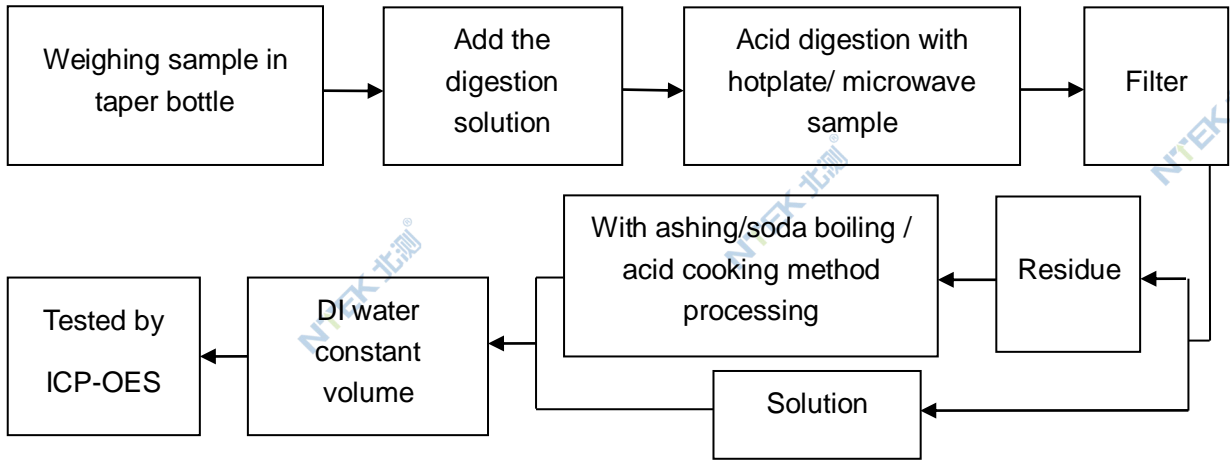
2. Chemical Test

Test item	Test method	Test instrument	MDL	Limit [△]
Lead (Pb)	IEC 62321-5:2013 Ed.1.0	ICP-OES	2 mg/kg	1000 mg/kg
Cadmium (Cd)	IEC 62321-5:2013 Ed.1.0	ICP-OES	2 mg/kg	100 mg/kg
Mercury (Hg)	IEC 62321-4:2013+AMD1:2017	ICP-OES	2 mg/kg	1000 mg/kg
Hexavalent Chromium(Cr(VI))	IEC 62321-7-1:2015 Ed.1.0	UV-Vis	0.10 µg/cm ²	1000 mg/kg
	IEC 62321-7-2:2017 Ed.1.0		8 mg/kg	
Polybrominated Biphenyls(PBBs)	IEC 62321-6:2015 Ed.1.0	GC-MS	5 mg/kg	1000 mg/kg
Polybrominated, Diphenyl Ethers(PBDEs)	IEC 62321-6:2015 Ed.1.0	GC-MS	5 mg/kg	1000 mg/kg
Bis-(2-ethylhexyl) Phthalate (DEHP)	IEC 62321-8:2017 Ed.1.0	GC-MS	30 mg/kg	1000 mg/kg
Benzyl butyl Phthalate (BBP)	IEC 62321-8:2017 Ed.1.0	GC-MS	30 mg/kg	1000 mg/kg
Dibutyl Phthalate (DBP)	IEC 62321-8:2017 Ed.1.0	GC-MS	30 mg/kg	1000 mg/kg
Diisobutyl Phthalate (DIBP)	IEC 62321-8:2017 Ed.1.0	GC-MS	30 mg/kg	1000 mg/kg

[△]The limit is quoted from RoHS Directive (EU) 2015/863 amending Annex II to Directive 2011/65/EU.

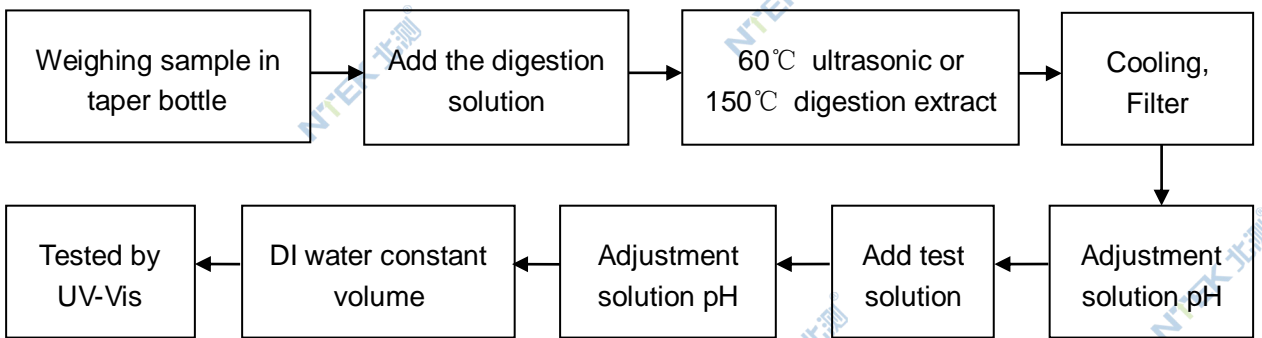
Test Flow:

1. Lead(Pb), Cadmium(Cd) , Mercury (Hg)

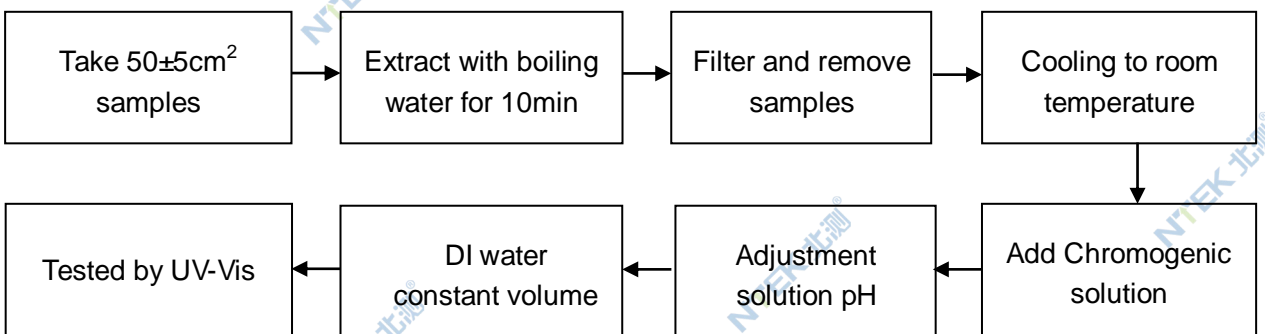


2. Hexavalent Chromium(Cr(VI))

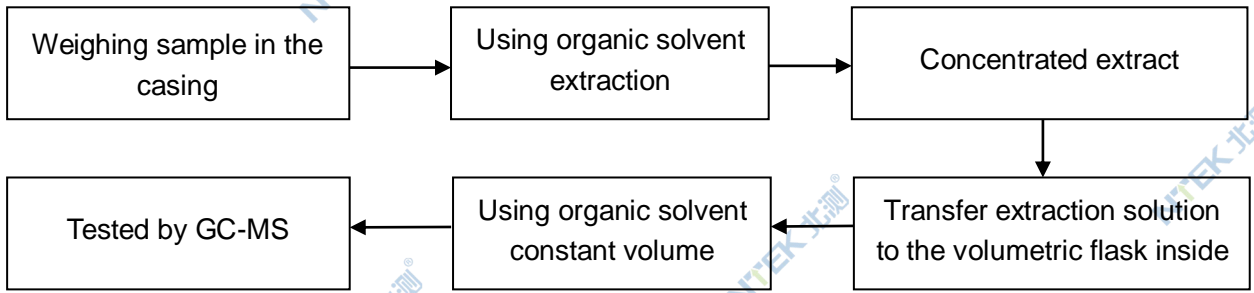
2.1 Non- metal sample(s)



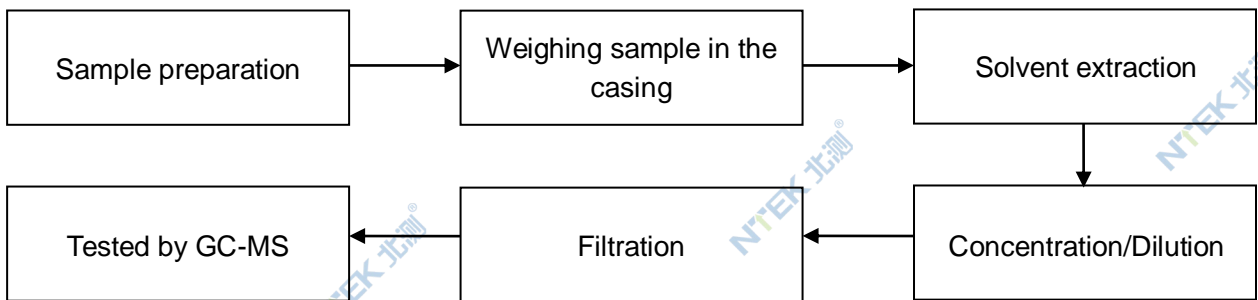
2.2 Metal sample(s)



3. PBBs/ PBDEs



4. Phthalates



Sample photo(s):



Fig.1(Finished photo)



Fig.2(Finished photo)



Fig.3

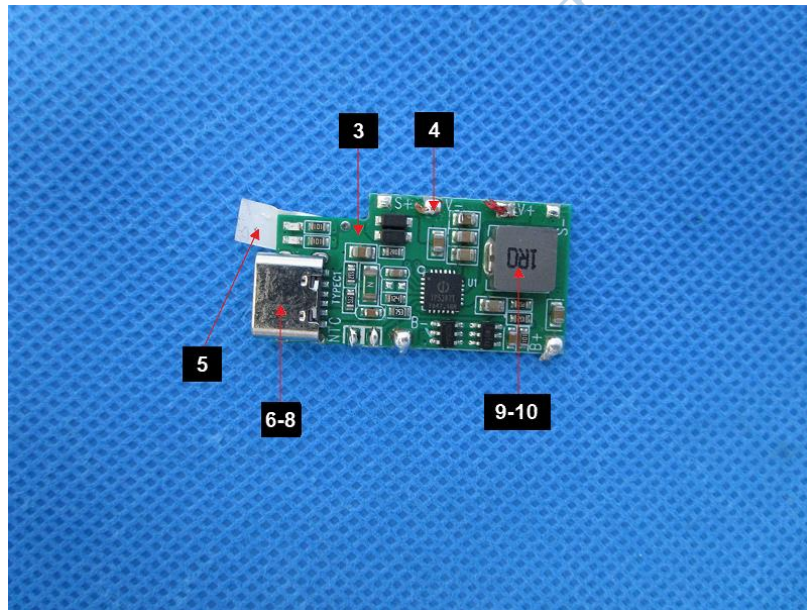


Fig.4



Fig.5

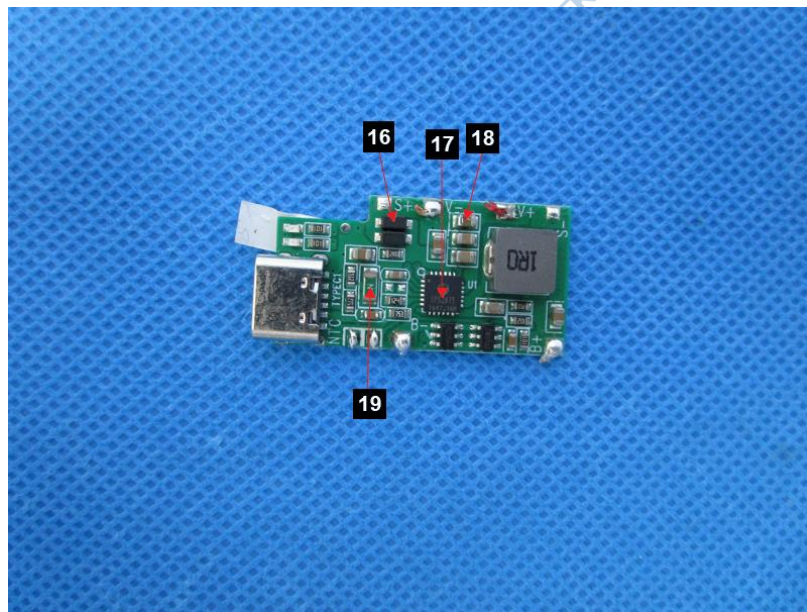


Fig.6

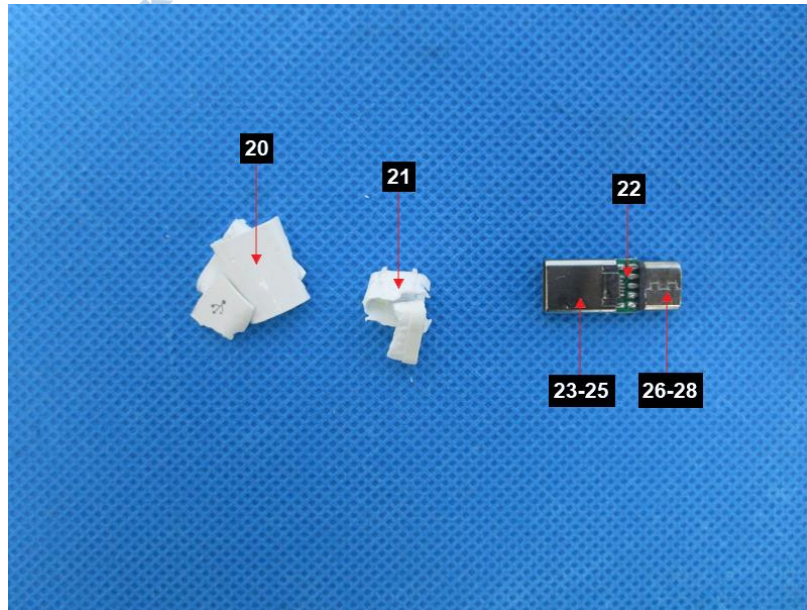


Fig.7

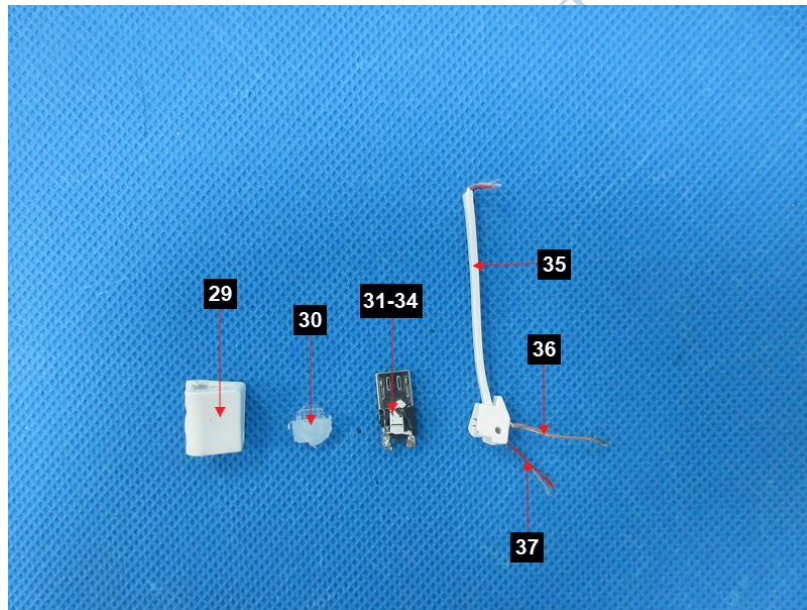


Fig.8

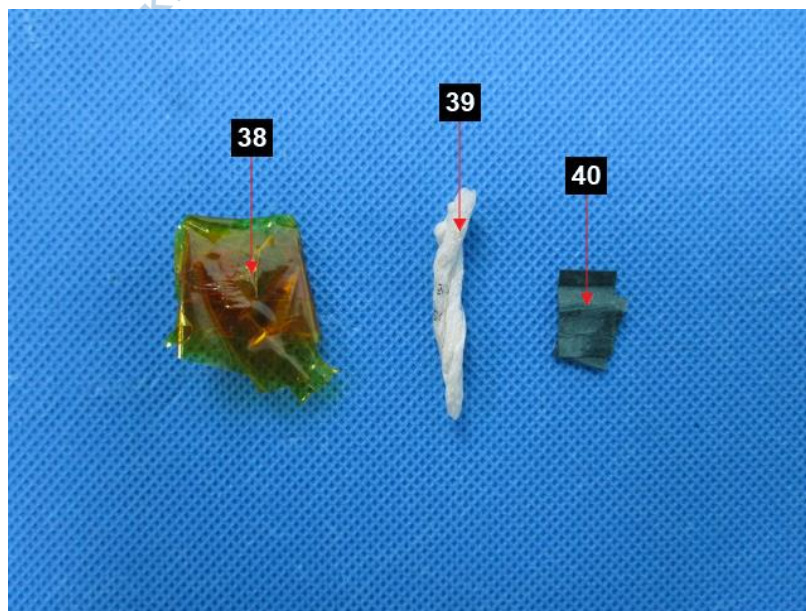


Fig.9

****End of Report****

The test results or data in this report will be used only for education, scientific research, enterprise product development and internal quality control or other purposes.

The test report is effective only with both signature and specialized stamp, The result(s) shown in this report refer only to the sample(s) tested. Without written approval of NTEK, this report can't be reproduced except in full.